



# SPIDER<sup>®</sup>

## SUPPORTS AND SPACERS

# Seal Ring

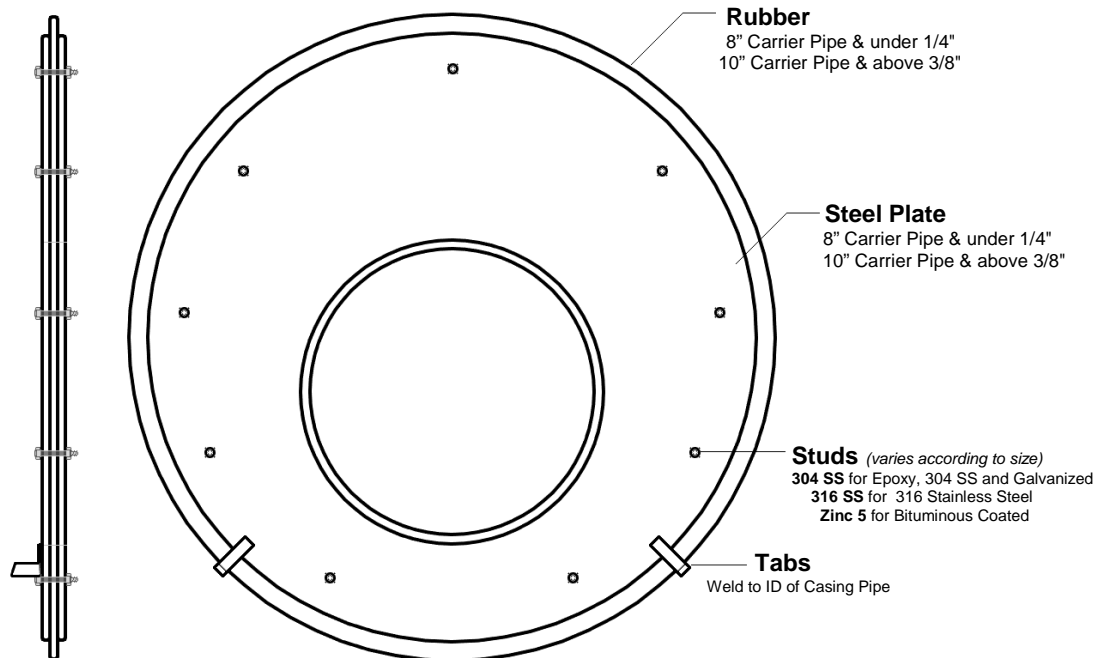
Model #SR

**Two steel plates compress the rubber inside of the casing pipe to create a water tight seal.**

**Options:**

**Steel Section:** Stainless Steel (304 and 316) or Carbon Steel with Bituminous, Galvanized or Epoxy Coated

**Rubber:** Neoprene, EPDM, Nitrile or Red Silicone



[www.SpiderPipeSupports.com](http://www.SpiderPipeSupports.com)

PO BOX 81 - BUTNER, NC 27509 - 919-575-0414 PHONE - 919-575-0420 FAX - 1-800-957-7433  
CustomerService@SpiderPipeSupports.com